



HEKO special scraper attachment Type SP

Technological characteristics for special links

- suitable for horizontal and inclined conveyors
- conveying in upper or lower trough
- simple and economic scraper attachment

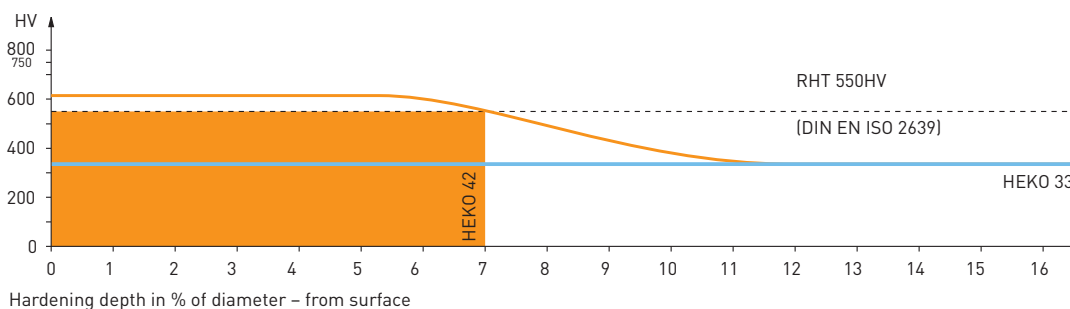
HEKO special scraper attachments are suitable for use with double- and multiple-strand conveyors. They can be fitted to conveyors with wheels having projecting teeth, pocket teeth or toothless wheels. Scraper centres can be varied by means of the number of chain links fitted. Supply can be either loose or pre-assembled with the attachments and scraper bars. We recommend the use of high tensile bolts for attaching the scraper, grade 8.8 minimum. Chains which have lengthened as a result of wear can be shortened by unbolting one scraper and removal of one (set) chain length and attachment.



Chrome-Molybdenum-chain shackle

	tempered qualities	hardened contact area qualities
	CrMo-steel	CrMo-steel
	HEKO 33	HEKO 42
Proof stress N/mm ²	300	240
Breaking stress N/mm ²	600	400
Contact surface hardness min. joint HV 1	330	600
Hardening depth d min. after etching		0.12 ₁
Hardening depth d min. Rht ₅₀ 550 HV 1		0.07

1) tolerance d-0,01d 2) Rht = hardening depth



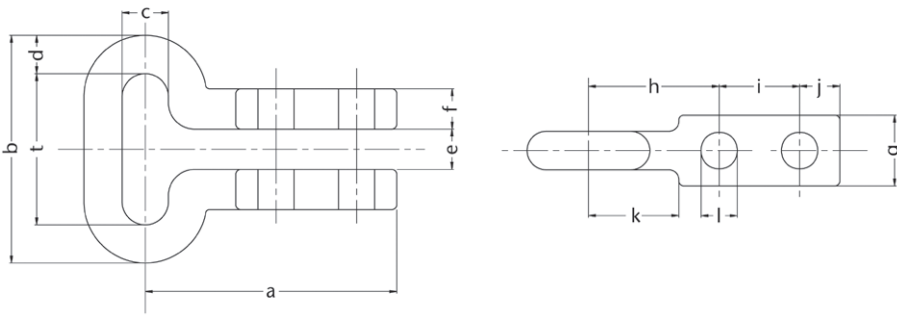
Some dimensions are also available made of stainless steel. On request, the supply of scraper attachments occurs with fastening material, e.g. bolt and nut.

Also, suitable scraper bars, standard or customized, can be furnished by HEKO.



HEKO special scraper attachment Type SP

HEKO special scraper attachments for DIN chains or works standard



to suit chain (mm)	DIN	dimensions (mm)										suitable bolt and nut	weight (kg/ each)	HEKO qualities*, MBK (kN)		
		a	b	c	e	f	g	h	i	j	k			l	tempered HEKO 33	hardened contact area HEKO 42
10 x 35	764	82	55	14	12	10	22	40	30	12	30	8.5	M8 x 45	0.25	94	63
13 x 45	764	100	71	18	15	12	28	50	35	15	34	12.5	M12 x 55	0.50	159	106
14 x 50	WN	104	78	17	16	13	33	58	30	16	36	13.0	M12 x 60	0.60	185	123
16 x 56	764	130	88	18	20	16	32	70	40	20	50	17.0	M16 x 75	0.90	241	160
16 x 64	WN	130	96	20	20	16	32	70	40	20	50	13.0	M12 x 75	1.00	241	160
18 x 63	764	125	99	24	19	20	35	65	40	20	45	17.0	M16 x 80	1.15	305	203
18 x 64	WN	125	100	24	19	20	35	65	40	20	45	17.0	M16 x 80	1.15	305	203
19 x 75	WN	125	113	23	20	20	35	65	40	20	45	17.0	M16 x 80	1.20	340	227
20 x 56	766	145	96	25	22	20	30	85	40	20	65	17.0	M16 x 90	1.25	376	251
20 x 70	764	145	110	27	22	20	35	85	40	20	65	17.0	M16 x 90	1.30	376	251
20 x 80	WN	124	120	23	22	20	40	68	35	21	54	18.0	M16 x 90	1.50	376	251
22 x 86	WN	140	130	26	25	20	50	80	40	20	62	18.0	M16 x 90	1.90	456	304
23 x 80	764	164	126	31	24	20	42	89	50	25	63	21.0	M20 x 90	2.00	498	332
23 x 100	WN	137	146	30	24	20	48	78	40	19	60	18.0	M16 x 90	2.15	498	332
26 x 91	764	170	143	35	31	22	45	95	50	25	65	21.0	M20 x 100	2.90	637	424

*) stated values refer to use of bolts and nuts grade 8.8, WN = works standard, MBK = min. breaking load