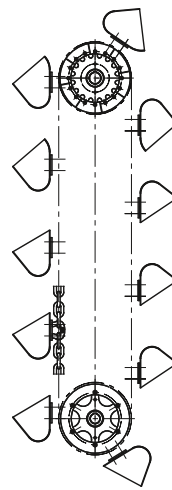


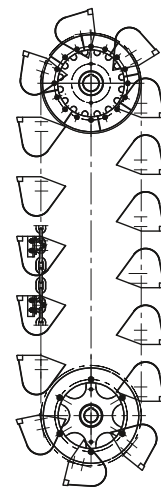
HEKO round link chains (DIN) Elevator Buckets

HEKO bucket elevator systems and their buckets

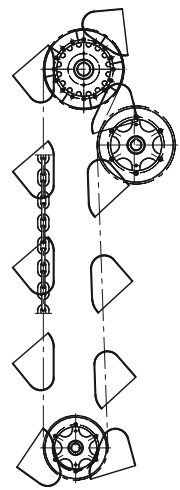
- Elevator buckets to DIN and other dimensions
- Manufactured in a wide range of materials, including stainless steel, surface coating or rubber inserts
- Manufactured to HEKO standard or to bespoke requirements
- Buckets widths from 800 mm inclusive stiffeners
- Suitable for all types of bucket attachments
- On request also with reinforced edges



Bucket elevator, rear wall mounted, for centrifugal discharge type

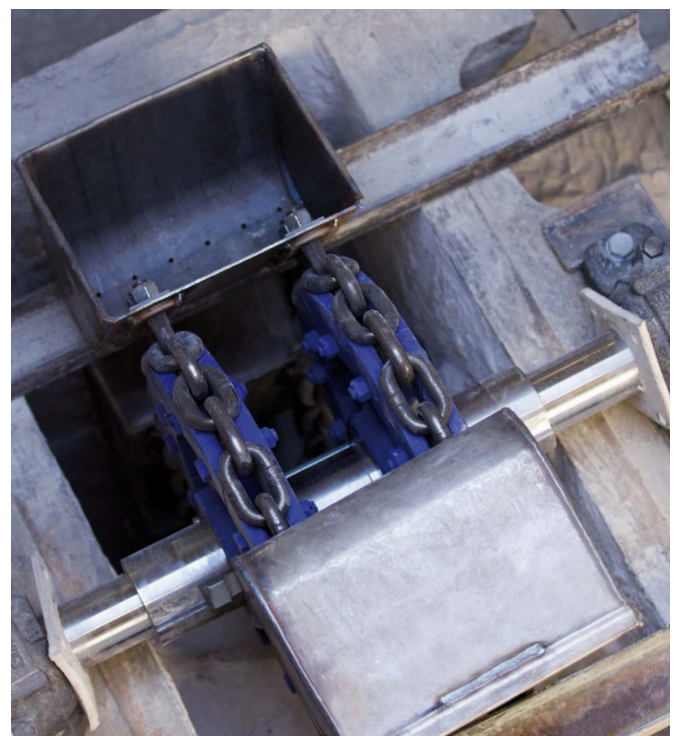


Bucket elevator, side wall mounted, for gravity discharge type

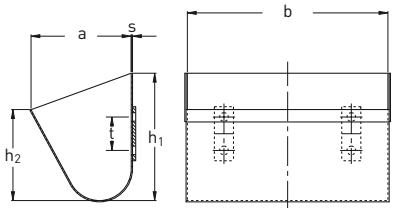


Bucket elevator, side wall mounted, with snub wheel, positive discharge type

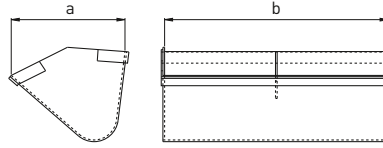
Buckets are supplied for rear wall mounting with re-enforcing strip (Type L) or re-enforcing plate (Type M) or for side wall mounting (Type N). Special designs to suit customers request can also be manufactured. The use of high capacity buckets enables a considerable increase in volume flow. When handling compacting material or large stones, which consolidates in the bucket elevator foot, the addition of ripping teeth to the front lip at approx. 5 to 10 % of the buckets is recommended. Such teeth tear out the build up material and help to minimise the scooping forces. The information below provides details of the most popular range of buckets.



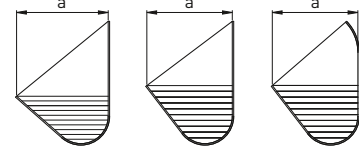
HEKO bucket elevator for chain shackles type TS, S, DIN 5699 and DIN 745



high capacity bucket bored for rear wall mounting type L



central discharge bucket



Elevator buckets to DIN 15233, 15234, 15235 (from left to right)

Dimensions and technical data

Bucket (mm)	PCD (mm)	chain speed (m/sec)		chain (mm)	type of chain shackle		dimensions (mm)		vol- ume (L)	weight (kg)	capacity DIN/TS t/h for each number of chain links			
		calc./	min-max		d x t	DIN/TS	DIN	h ₁			h ₂	3	5	7
160 x 140 x 3	500	1.00	0.95 - 1.2	10 x 35	45	45	15233	160 63	1.0	2.4		11/11	8/8	7/7
							15234	180 95	1.5	2.6		18/19	14/15	11/11
							15235	200 95	1.5	2.6		18/19	14/15	11/11
160 x 160 x 3	500	1.00	0.95 - 1.2	10 x 35	45	45	15233	180 71	1.2	2.7		14/14	11/11	9/9
							15234	200 106	1.9	2.9		23/24	18/18	14/15
							15235	224 106	1.9	2.9		23/24	18/18	14/15
200 x 160 x 3	500	1.00	0.95 - 1.2	13 x 45	56	45	15233	180 71	1.5	3.2		14/15	10/11	8/9
							15234	200 106	2.4	3.4		23/24	17/18	14/14
							15235	224 106	2.4	3.4		23/24	17/18	14/14
200 x 180 x 3	630	1.05	0.95 - 1.2	16 x 56	63	56	HL	224 159	4.1	4.6		39/41	30/31	24/25
							15233	200 80	2.4	3.6		19/20	15/15	12/12
							15234	224 118	3.7	4.4		30/31	23/23	18/18
250 x 200 x 4	630	1.05	1.0 - 1.3	16 x 56	63	56	15233	224 90	3.0	6.2		24/25	18/19	15/15
							15234	250 132	4.6	6.8		38/39	28/29	23/24
							15235	280 132	4.6	6.8		38/39	28/29	23/24
250 x 200 x 4	630	1.10	1.0 - 1.3	18 x 63	70	63	HL	250 175	6.3	7.8		52/53	39/40	32/32
							15233	224 90	3.8	7.2		28/29	21/22	17/17
							15234	250 132	5.8	8.0		44/45	33/34	27/28
315 x 224 x 4	710	1.20	1.0 - 1.4	20 x 70	80	70	15233	250 100	5.9	9.7		44/45	33/34	26/27
							15234	280 150	9.4	10.9		70/72	53/54	42/43
							15235	315 150	9.4	10.9		70/72	53/54	42/43
400 x 250 x 4	800	1.25	1.0 - 1.4	23 x 80	91	80	HL	315 229	16.3	14.3		123/126	93/94	74/75
							15233	280 112	9.3	16.4		63/65	48/49	38/39
							15234	315 170	14.9	18.1		102/105	76/78	62/63
500 x 280 x 5	900	1.30	1.1 - 1.5	26 x 91	105	91	15233	315 125	14.6	23.4		91/94	69/70	55/56
							15234	355 190	23.5	25.3		147/151	111/113	89/90
							15235	400 190	23.5	25.3		147/151	111/113	89/90
630 x 315 x 5	1000	1.35	1.2 - 1.5	30 x 105	126	105	HL	400 287	40.5	33.1		254/260	192/195	154/156
							15233	355 140	23.3	37.1	192/202	130/134	98/101	
							15234	400 212	37.3	40.7	308/323	208/215	157/161	
800 x 355 x 6	1250	1.45	1.2 - 1.5	36 x 126	147	126	15233	400 160	37.6	51.2	280/292	189/194	143/146	
							15234	450 236	58.3	55.5	434/452	293/301	221/226	
							15235	500 236	58.3	55.5	434/452	293/301	221/226	
1000 x 400 x 6	1250/1400	1.50	1.2 - 1.6	39 x 136	147	136	HL	500 353	101.3	81.4	755/786	510/525	385/393	
							15233	450 180	59.4	70.5	433/442	290/294	218/221	
							15234	500 265	92.0	75.3	447/456	450/456	339/343	
1250 x 450 x 6	1400/1500	1.50	1.2 - 1.6	42 x 147	147	147	HL	560 397	159.9	107.0	1166/1190	783/794	589/595	
							15233	450 180	59.4	70.5	433/442	290/294	218/221	
							15234	500 265	92.0	75.3	447/456	450/456	339/343	
1400 x 425 x 8	1500	1.50	1.2 - 1.6	42 x 147	147	147	15234	545 282	117.0	119.3	805	537	402	
							15233	575 300	150.0	137.8	1033	688	516	
							HL	630 449	256.3	141.0	1756	1177	883	

Degree of filling 75%, density of material 1,0 t/m³, HL = high capacity bucket, d x t = dia. x pitch