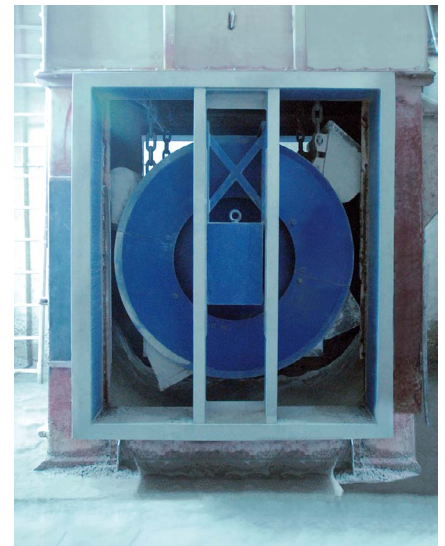
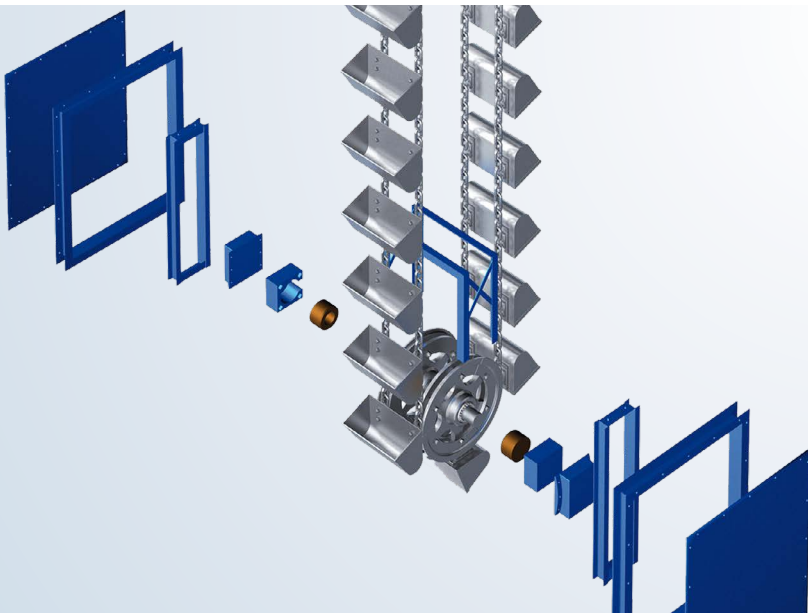
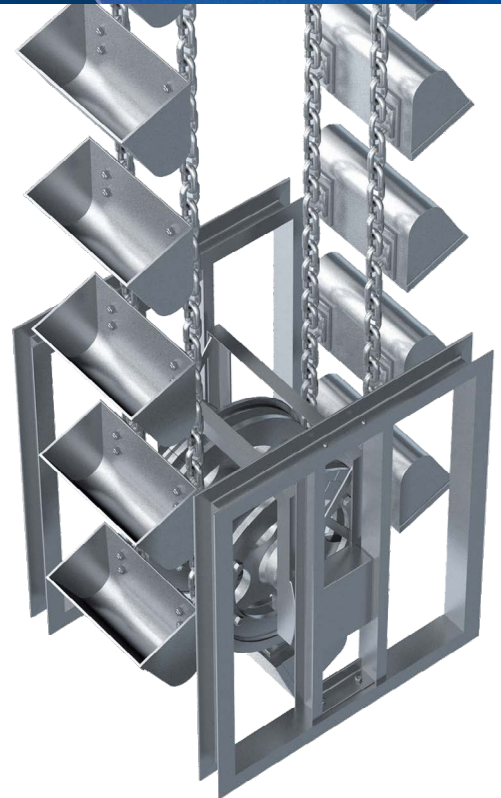
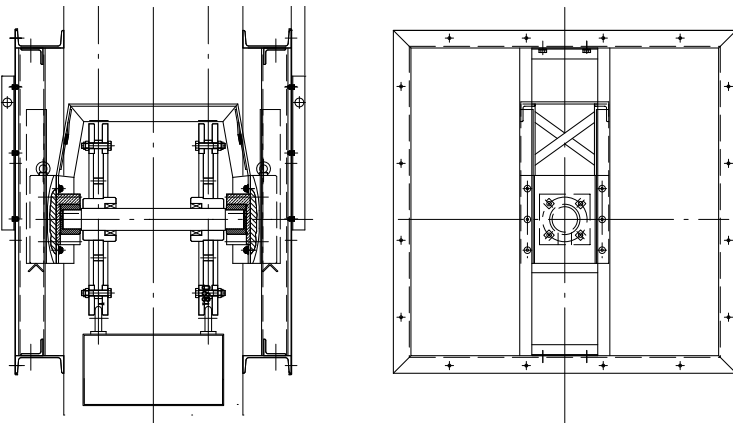


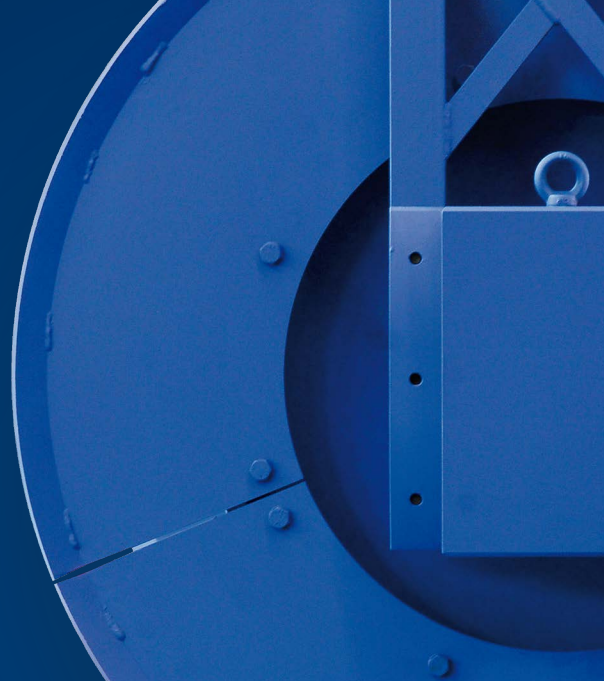
# HEKO round link chains – Elevator – return and tensioning unit

## HEKO return and tensioning unit with maintenance-free bearings

- Suitable for new and existing bucket elevators from 160 mm to 1600 mm
- Minimal attention required by use of gravity self-tensioning and maintenance-free bearings
- Dust emission from the bearings is eliminated



Installation of a HEKO deflection station

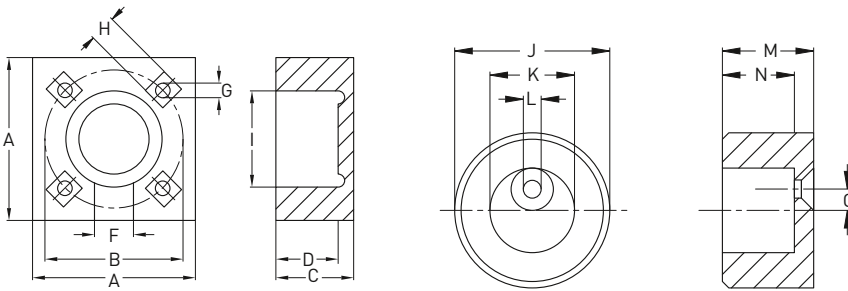


# HEKO round link chains – Elevator - return and tensioning unit

## HEKO return and tensioning unit with maintenance-free bearings

HEKO friction bearings have the advantage of being fitted inside the boot casing thus, completely eliminating the need for shaft seals. Such bearings are especially advantageous when handling dry or abrasive products, but they can also be fitted below the waterline.

A wear protection sleeve, manufactured from CrNi steel, is fitted over the shaft ends, secured by a screw. The sleeves turn inside the cast bearing blocks, in hard alloy steel, without lubrication. Each bearing block is bolted to the framework of the tensioning unit by 4 screws.



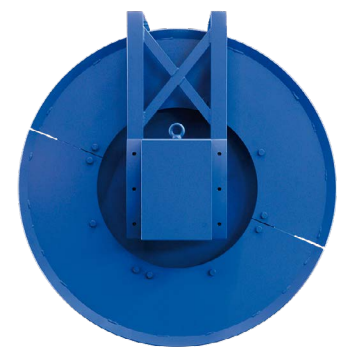
HEKO maintenance-free bearing blocks and shaft liners

### Dimensions of HEKO bearing blocks

Type	Dimensions (mm)							
	A	B	C	D	F	G	H	I
LGH 18-4	178	165	82	65	52	17	30	112
LGH 18-11	230	203	108	90	55	21	34	138

### Dimensions of HEKO wear protection sleeves

Type	Dimensions (mm)					
	J	K	L	M	N	O
LGH 18-4	110.2	60.0	17	64.0	54	15
LGH 18-4	110.2	74.5	21	64.0	54	15
LGH 18-11	135.4	87.3	21	88.9	80	27
LGH 18-11	135.4	100.0	21	88.9	80	27



HEKO tensioning unit with maintenance-free bearings