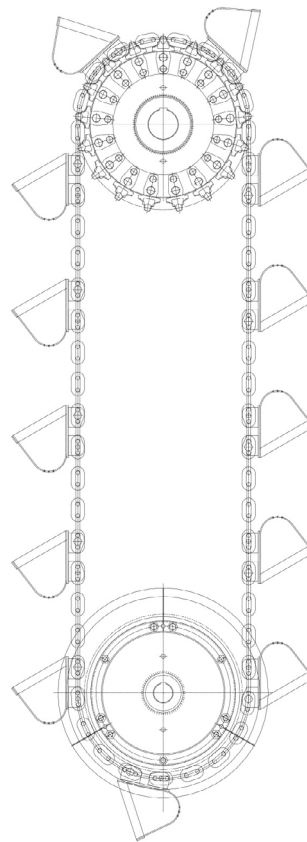


HEKO round steel chains (ENDLESS) Elevator buckets

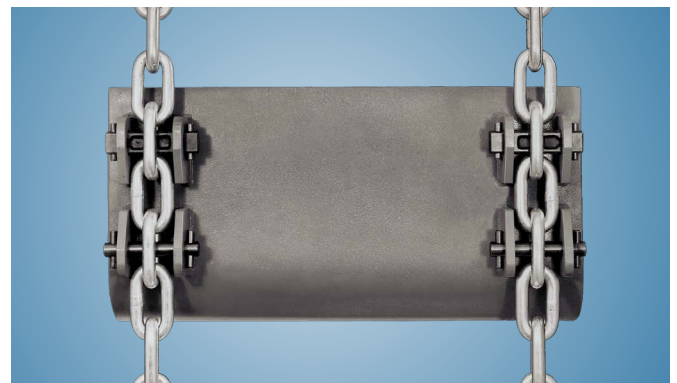
HEKO chain bucket elevator systems and elevator buckets

- Elevator buckets to DIN and other dimensions
- Manufactured in a wide range of materials, including stainless steel, surface coating or rubber inserts
- Manufactured to the HEKO standard or bespoke requirements
- Buckets widths from 800 mm inclusive stiffeners
- Suitable for all types of bucket attachments
- with reinforced lips on request

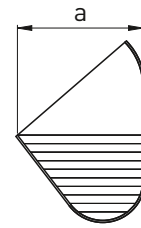
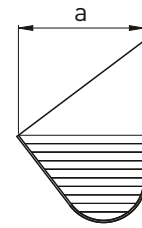
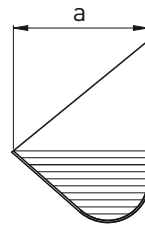
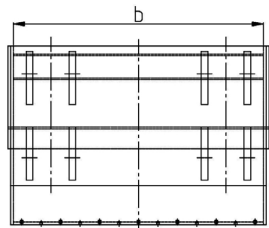
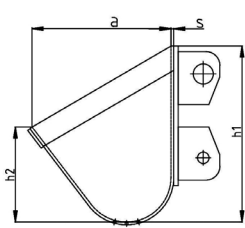
Buckets can be supplied with back wall plate and welded plug-in attachment plate. Special requirements to suit customers request can also be manufactured. The use of high capacity buckets enables a considerable increase in volume flow. When handling compacting material or large stones, which consolidates in the bucket elevator foot, the addition of ripping teeth to the front of approx. 5 to 10 % of the buckets is recommended. Such teeth tear out the build-up of material and help to minimise the scooping forces. The information below provides details of the most popular range of buckets.



Bucket elevator, rear wall mounted
(centrifugal discharge type)



HEKO Elevator buckets with plug-in attachments type ST



High capacity buckets for rear wall mounting, form L

Elevator buckets to DIN 15233, DIN 15234 and DIN 15235

Dimensions and technical data for HEKO buckets

Buckets (mm)	PCD (mm)	chain speed		chain (mm)	DIN	dimensions (mm)		volume (L)	weight incl. sidewall plates (kg)	capacity type TS t/h for each number of chain links		
		calc./	min-max			d x t	h ₁			h ₂	4	6
160 x 160 x 3	510	1.00	0.95-1.2	14 x 50	15234	200	106	1.9	4.3	25	17	13
					15235	224	106	1.9	4.3	25	17	13
200 x 160 x 3	510	1.00	0.95-1.2	14 x 50	15234	200	106	2.4	4.8	32	22	16
					15235	224	106	2.4	4.8	32	22	16
200 x 180 x 3					HL	224	159	4.1	6.3	55	37	28
250 x 180 x 3	510	1.05	0.95-1.2	14 x 50	15234	224	118	3.7	5.8	52	35	26
					15235	250	118	3.7	5.8	52	35	26
250 x 200 x 4	510	1.05	1.0-1.3	14 x 50	15234	250	132	4.6	9.3	65	43	33
					15235	280	132	4.6	9.3	65	43	33
250 x 200 x 4					HL	250	175	6.3	9.2	90	60	45
315 x 200 x 4	653	1.10	1.0-1.3	16 x 64	15234	250	132	5.8	10.4	67	45	34
					15235	280	132	5.8	10.4	67	45	34
315 x 224 x 4					HL	280	198	10.0	13.3	115	77	58
400 x 224 x 4	765	1.20	1.0-1.4	19 x 75	15234	280	150	9.4	14.9	102	68	51
					15235	315	150	9.4	14.9	102	68	51
400 x 250 x 4					HL	315	229	16.3	18.3	176	117	88
500 x 250 x 5	877	1.25	1.0-1.4	22 x 86	15234	315	170	14.9	25.1	146	97	73
					15235	355	170	14.9	25.1	146	97	73
500 x 280 x 5					HL	355	253	25.2	30.5	247	165	123
630 x 280 x 5	1020	1.30	1.1-1.5	26 x 100	15234	355	190	23.5	34.3	206	137	103
					15235	400	190	23.5	34.3	206	137	103
630 x 315 x 5					HL	400	287	40.5	42.1	355	237	177
800 x 315 x 6	1020	1.35	1.2-1.5	26 x 100	15234	400	212	37.3	49.7	340	226	170
					15235	450	212	37.3	49.7	340	226	170
800 x 355 x 6					HL	450	320	64.8	66.4	590	393	295
1000 x 355 x 6	1224	1.45	1.2-1.5	30 x 120	15234	450	236	58.3	69.0	475	317	238
					15235	500	236	58.3	69.0	475	317	238
1000 x 400 x 6					HL	500	353	101.3	94.9	826	551	413
1250 x 400 x 6	1388	1.50	1.2-1.6	34 x 136	15234	500	265	92.0	90.3	685	456	342
					15235	560	265	92.0	90.3	685	456	342
1250 x 450 x 6					HL	560	397	159.9	122.0	1190	793	595
1400 x 425 x 8					15234	545	282	117.0	134.3	871	580	435
1600 x 450 x 8					15234	575	300	150.0	152.8	1116	744	558
1600 x 500 x 6					HL	630	449	256.3	156.0	1908	1272	954

Degree of filling 75 %, density of material 1,0 t/m³, HL = high capacity bucket, t = pitch, d = diameter