

HEKO

round link chains elevator

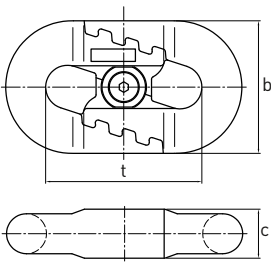
Chain locks

Chain locks type HF/HR and HV

Chain locks type HF/HR and HV are suitable for long chain strands. The physical characteristics and dimensions of the chain locks are related to the corresponding chain. The chain lock can be mounted easily and quickly. The chain lock can only be mounted in vertical position.



chain lock type HF

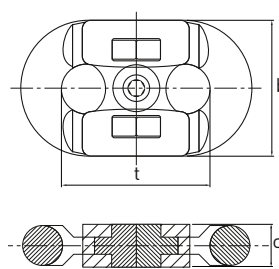


matching chain (mm)	dimensions (mm)		weight (kg/each)	
	d x t	height b		width c
22 x 86		74,0	25,5	1,9
25 x 95		89,0	29,0	2,2
26 x 92		87,0	29,5	2,4
26 x 100		87,0	29,5	2,4
30 x 108		100,0	36,0	2,9
30 x 120		105,0	36,0	3,2
34 x 126		117,0	40,0	4,2
34 x 136		117,0	40,0	4,2
36 x 126		117,0	40,0	4,5
38 x 144		133,0	45,0	5,2

d = diam.; t = pitch



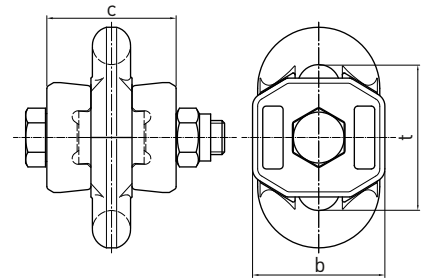
chain lock type HR



matching chain (mm)	dimensions (mm)		weight (kg/each)	
	d x t	height b		width c
14 x 50		47,0	15,0	0,25
14 x 64		47,0	15,0	0,25
16 x 64		56,0	17,5	0,50
19 x 75		64,5	20,5	0,80



chain lock type HV



matching chain (mm)	dimensions (mm)		weight (kg/each)	
	d x t	height b		width c
14 x 50		47,0	52,0	0,6
16 x 64		57,0	61,0	1,1
19 x 75		70,0	67,0	2,0
22 x 86		78,0	77,0	2,8
26 x 100		90,0	88,5	4,6
30 x 120		105,0	105,0	8,1
34 x 136		118,0	120,0	11,0