

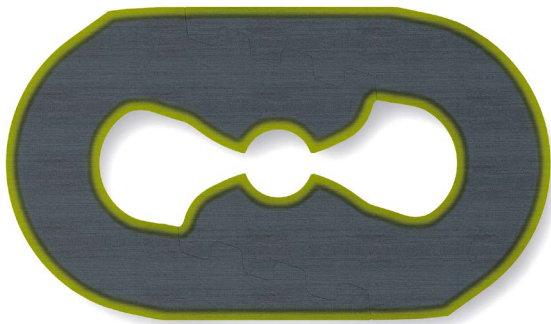


Deasher HEKO chain connectors

Chain connector Type HF/HR

Chain connector type HF/HR are used for connection of long chain strands. The technical character and the dimensions are related to the related chains. The connector is easy to install and normally with the same service life as the chain. Please note that this type of connector must be installed in a vertical position

- For connection of long chain strands
- Technical character and dimensions matched to the chain
- Easy assembly
- Operation only as a vertical link



Longitudinal cut of casehardened connector

Technological details of HEKO HF/HR connector

	case hardened
	HEKO 6S
Proof load N/mm ²	240
Breaking load N/mm ²	400
Surface hardness min. in interlink HV 1	800 ₄₎
Hardening depth d min. after etching	0.09
Hardening depth d min. CHD ₂₎ Rht ₃₎ 550 HV 1	0.05

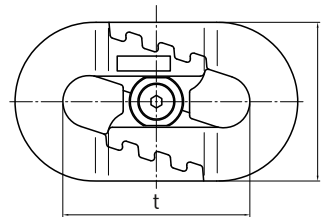
1) tolerance d-0,01d

2) CHD = case hardened depth

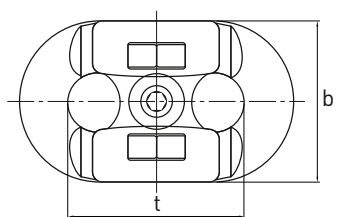
3) Rht = hardening depth

4) 10% tolerance

To suit chain nominal diam. x pitch (mm) d x t	dimensions (mm)		weight (kg / each)	type
	height b	width c		
14 x 50	47.0	15.0	0.25	HR
14 x 64	47.0	15.0	0.25	HR
16 x 64	56.0	17.5	0.50	HR
19 x 75	64.5	20.5	0.80	HR
22 x 86	74.0	25.5	1.90	HF
25 x 95	89.0	29.0	2.20	HF
26 x 92	87.0	29.5	2.40	HF
26 x 100	87.0	29.5	2.40	HF
30 x 108	100.0	36.0	2.90	HF
30 x 120	105.0	36.0	3.20	HF
34 x 126	117.0	40.0	4.20	HF
34 x 136	117.0	40.0	4.20	HF
36 x 126	117.0	40.0	4.50	HF
38 x 144	133.0	45.0	5.20	HF



Chain connector type HF



Chain connector type HR

